

**Frank Buchman**

Marketing Consultant

Direct: 785 - 228 - 7259

Cell: 785 - 499 - 3063

[frank.buchman@morris.com](mailto:frank.buchman@morris.com)

PO Box 1818

1210 SW Executive Dr.

Topeka, Ks 66615

## Higher Averages For Purebred Cattle Auctions Advertised On WIBW



Results continue to come in from purebred cattle breeders who advertised their annual production sales on AM 580 WIBW with averages well above one year ago.

David Breiner and his family of Alma hosted their annual Mill Creek Ranch production sale at Manhattan and reported averages of 36 Hereford bulls \$4,334; 46 Angus bulls \$2,960; 33 Hereford females \$2,241; and 24 Angus females \$1,785.

According to sale manager Roger Gatz, Judd Ranch at Pomona had the following bull sale averages: 79 fall Gelbvieh \$5,224; 49 fall Balancer \$5,490; 55 spring yearling Gelbvieh \$4,551; 27 spring yearling Balancer \$4,726; and 10 spring yearling Red Angus \$3,740.

Craig Good said the 18 yearlings offered in his Good Farms Angus Choice Bull Sale at Olsburg averaged \$3,385.

Ron Hinrichsen reported the R&L Annual Bull Sale at Westmoreland set a \$2,798 average on 61 bulls, while 37 commercial open heifers averaged \$1,140.

Craig Beran said the 25<sup>th</sup> annual bull sale of B&D Herefords and Beran Bros Angus at Claflin tallied these averages: 37 two-year-old Herefords \$3,085; 21 fall yearling Herefords \$3,464; 20 two year-old Angus \$2,930; 18 fall yearling Angus \$2,928; and 27 yearling Angus \$2,133.

Steve Gleason at Maple Hill announced the Sunflower Genetics 15<sup>th</sup> Annual Production Sale (photo) averages: 40 Simmental and SimAngus bulls \$3,023; 16 Angus bulls \$3,019; 40 Simmental and SimAngus heifers \$1,416; and 13 Angus heifers \$1,558.

Jan and Arden Oleen, the Oleen Brothers at Dwight reported their "Best of Both Worlds" sale featuring Horned Herefords and Black Angus averages: 62 Hereford bulls \$4,267; 70 Angus bulls, \$3,760; 73 black whiteface pairs \$2,536; 18 commercial Hereford pairs \$2,191; 23 commercial Angus pairs \$2,245; and 86 commercial fall bred heifers \$1,905.

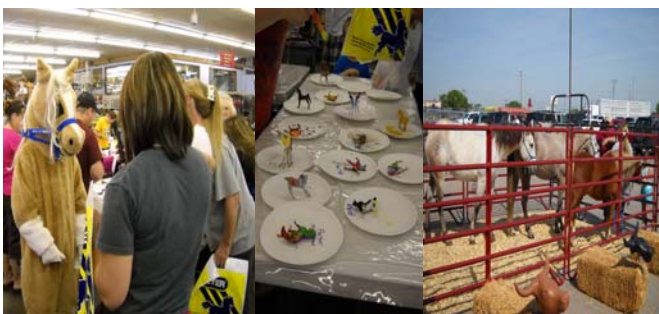
Additional results from purebred cattle sales advertised on AM 580 WIBW this past winter and spring were reported earlier and more will be announced in the future as they come in.

## Breyer Horses Part Of Bluestem 50

An AM 580 WIBW advertiser from the start, Bluestem Farm & Ranch Supply at Emporia is celebrating 50 years in business with many special events planned this year.

The Breyer Fun Day attracted considerable attention as youth painted more than 150 Breyer horses under supervision of Pal-o-mine (in costume).

Meanwhile outside, Lyon County 4-H Club members had a live horse display that attracted lots of petting.



## Land Estate Sells High



Auctioneer Greg Kretz, who helped coordinate AM 580 WIBW advertising of former Kansas Governor Bill Avery's estate auction, said "We got along quite well."

Located near Wakefield in Clay County, Tract 1, including 168 acres, with 70 acres cropland brought \$280,000, while Tract 2, the 191 acres of pasture, sold for \$390,000. "Two people really wanted that tract," Kretz admitted.

Tract 3, the farmstead of 10 acres with an old house and buildings in a "great location," at the edge of the lake, brought \$55,000. "Overall, it was a real good sale," Kretz evaluated.

**Padre says:**

*"Life may not be the party we hoped for, but while we are here, we might as well dance."*